

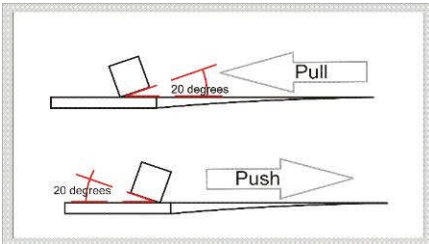


**Congratulations!** You have just purchased the ReedGeek® “*Universal*,” the most effective and versatile reed tool available. Experience the benefits of a truly flat reed and fine-tune the entire reed in record time.

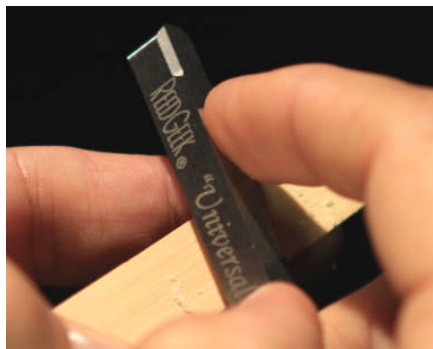
**CAUTION: Tool edges are SHARP; please handle with care.**

### LEVELING EDGES

These four long edges are the heart of the ReedGeek® “*Universal*’s” flattening capability.



To flatten the back of the reed, hold the reed in one hand and the *Universal* tool in your dominant hand, between thumb and forefinger. Scrape gently, holding the tool’s edge flush against the reed table. You may use either a pushing or pulling stroke. When pushing, tilt the tool away from you about 20 degrees. When pulling, tilt the tool toward you. Both strokes may be combined to form a full fluid motion.



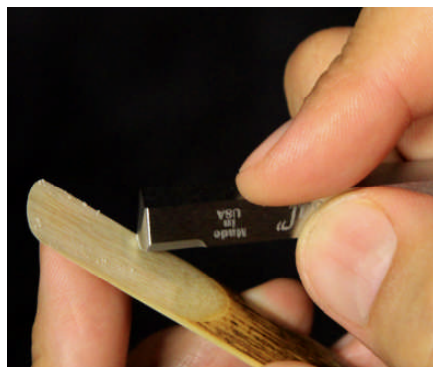
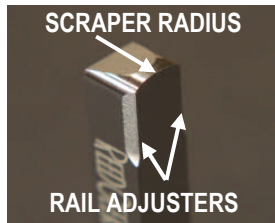
Use minimal pressure, let the weight and true edge of the tool find and remove the high spots.

### THE SCRAPER RADIUS

The scraper radius is at the tip of the *Universal* and has an engineered radius that may be used for precision

scraping, including balancing the reed’s tip, adjusting the heart or other fine adjustments.

The radius allows single point contact for scraping very precise areas of the reed quickly. To make your scrape, push or pull the tool or move in a circular motion as you would use a pencil eraser.



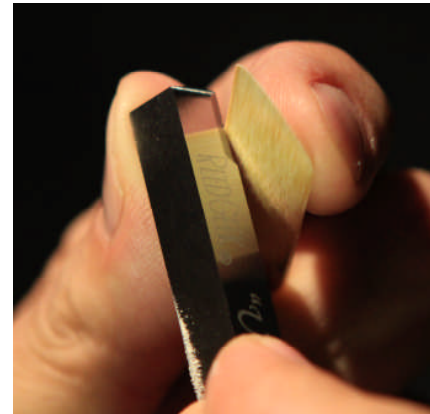
As with leveling, use minimal pressure and allow the tool to do the work. Play test often.

### THE RAIL ADJUSTERS

On each side of the scraper edge is a rail adjuster that has been engineered especially to adjust or modify the reed’s rails.

With the top of the reed facing up, place one rail adjuster at the point of adjustment; tilt the *Universal* as in the leveling process and either push or pull the tool to make the desired change.

The rail adjusters cut quickly with great control. These adjusters are also strong enough to remove or reshape bark areas. Too much pressure can gouge the cane; start with light pressure.



With only a little practice, you will quickly be able to use the *Universal* to adjust and fine tune your reeds exactly to your liking.

If you’d like additional information or to see further demonstrations, please visit [www.reedgeek.com](http://www.reedgeek.com) and [youtube.com/reedgeektool](https://www.youtube.com/reedgeektool). Thank you, we hope you enjoy a lifetime of usefulness from our products.

### Addressing the balance near or at the tip of a reed:

By flexing the reed with your fingertips and upon visual inspection, check to see if one rail is heavier (thicker) than the other. Use the *Geeks* rail adjusters by holding the tool almost perpendicular and adjust the heavier rail. This is also very effective to adjust the tip-corners of the reed; also known as the “ears of the reed.” By very lightly bending the right and left ears of the reed with you forefingers you will be able to determine if one side is heavier than the other.

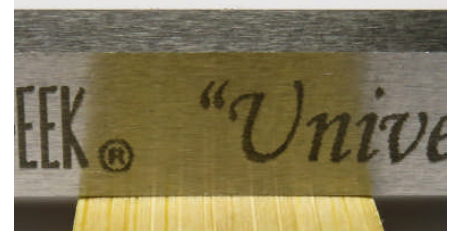
Note: Think of each ear of the reed as an airplane wing. Each wing needs to be identical for consistent air-flow and lift. When the reed is in balance with itself and the mouthpiece tip, the sound starts resonating better and your playing becomes very natural.

Think of the scraper radius as a pencil eraser. Hold the tool with your thumb and forefinger as a kid would hold a pencil eraser. The radius is designed to make pinpoint adjustments to any denser parts of the reed. Hold the reed in front of a light source and very lightly “erase away” and shape any darker, denser parts of the reed. REMEMBER: Let the weight of the tool do the work! One very important spot, on the reed, to balance is right below the tip, 1/8” or so in from the left and right hand tip corners. Again, identify and remove the denser cane, so that the top of the heart displays a very concise, inverted “U” or “Christmas tree” shape.

### FLATTENING WARPAGE

Here are before and after pictures showing the results of using the *Geek*’s edges to correct slight warping found on new reeds.

Before:



After:



Copyright © 2013, ReedGeek Inc.  
All Rights Reserved  
[www.reedgeek.com](http://www.reedgeek.com)